



LeaderLife
Let's Grow.

2019 ANNUAL REPORT

PREPARED BY
JOH LEADER
Founder and CEO

CONTENTS

03

OUR MISSION & VISION

04

OUR HISTORY

05

ABOUT US

08

PROGRAMS

14

OUR PEOPLE

17

MESSAGE FROM OUR CHAIR & CEO

19

FROM OUR PATRON

21

OUR IMPACT IN 2018 / 2019

24

HIGHLIGHTS OF THE YEAR

32

FINANCIALS

34

SUPPORTERS

35

THE FUTURE





OUR MISSION

To grow our community;
by helping kids doing it tough live their best life.

OUR VISION

For all to lead a life of purpose,
participation and potential,
with no child left behind.



OUR HISTORY

LeaderLife Ltd was founded in 2018 by Joh Leader, whose passion is compassion and ensuring that no child is left behind no matter the circumstance. LeaderLife is now a not-for-profit organisation (recently transitioned from a sole trader status) with DGR charity status that commenced this sacred community work in 2011 from Apollo House; a community centre originally started by the East Dubbo Women's group located in the heart of Apollo Estate in East Dubbo. Apollo Estate is largely a social housing estate in Dubbo, with evidence of intergenerational disadvantage and trauma. LeaderLife uses a soft entry, community-driven approach to engage those kids and families having a hard time, and reach out to some of the hardest to reach people in our community.

ABOUT US

We work with the kids, who by no fault of their own, have been caught in the crossfire of some incredibly complex issues like domestic violence, neglect, abuse and trauma.

LeaderLife bravely do things a bit differently, knowing that 'all can lead a life of purpose, participation and potential' if the right approach is adopted. We compassionately guide kids to always be learning because "when you know better ... you do better". We commit for the long haul, only working holistically with individuals, families and the community with the principles of the 'Circle of Courage Model' underpinning everything we do. This approach shows us that to be emotionally healthy, all people need a sense of belonging, mastery, independence and generosity.

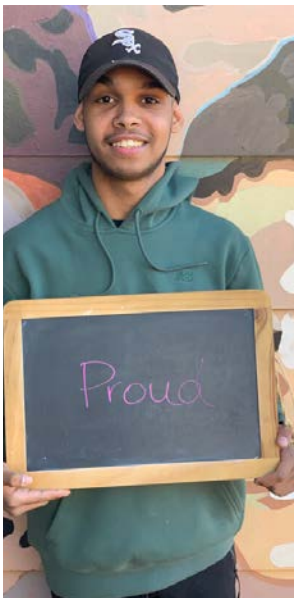
LeaderLife also knows that it takes a really strong community approach to help young people break out of disadvantage, especially Indigenous kids. We work ever so closely with many different levels of government, philanthropists, organisations, Indigenous Elders, community groups and most families to help kids break out of destructive life patterns involving adversities like suicide, drugs and crime, ultimately so they can lead a life that is meaningful, positive, happy and thriving.


Our approach is simple and we will always work together to ensure that no child is left behind no matter the circumstance. We will continue providing creative opportunities for our young people, in hope that all kids feel wonderfully precious and dearly cared about in our town.



MEET THE KIDS

AND THEIR ONE WORD THAT DESCRIBES WHAT
THE LEADERLIFE PROGRAMS MEAN TO THEM



A young boy with paint on his face and shirt, smiling, next to a girl with a cap and paint on her face and shirt. The background is a blurred outdoor setting with trees and people.

**"I GOT IN TROUBLE OFF THE
POLICE AND KICKED OUT OF
SCHOOL. I WAS MAKING SOME
BAD CHOICES BUT THE
WORKERS IN THE [LEADERLIFE]
PROGRAM STUCK BY ME. THEY
HELPED ME AT COURT AND GOT
ME INTO ANOTHER SCHOOL."**

15-YEAR-OLD BOY

PROGRAMS



RESILIENCE

Conduit between
community and
mainstream services



SKILLBUILDERS

Early intervention,
Building life skills and
relationships



CATALYST

Developing and
strengthening
functional life skills for
work-readiness

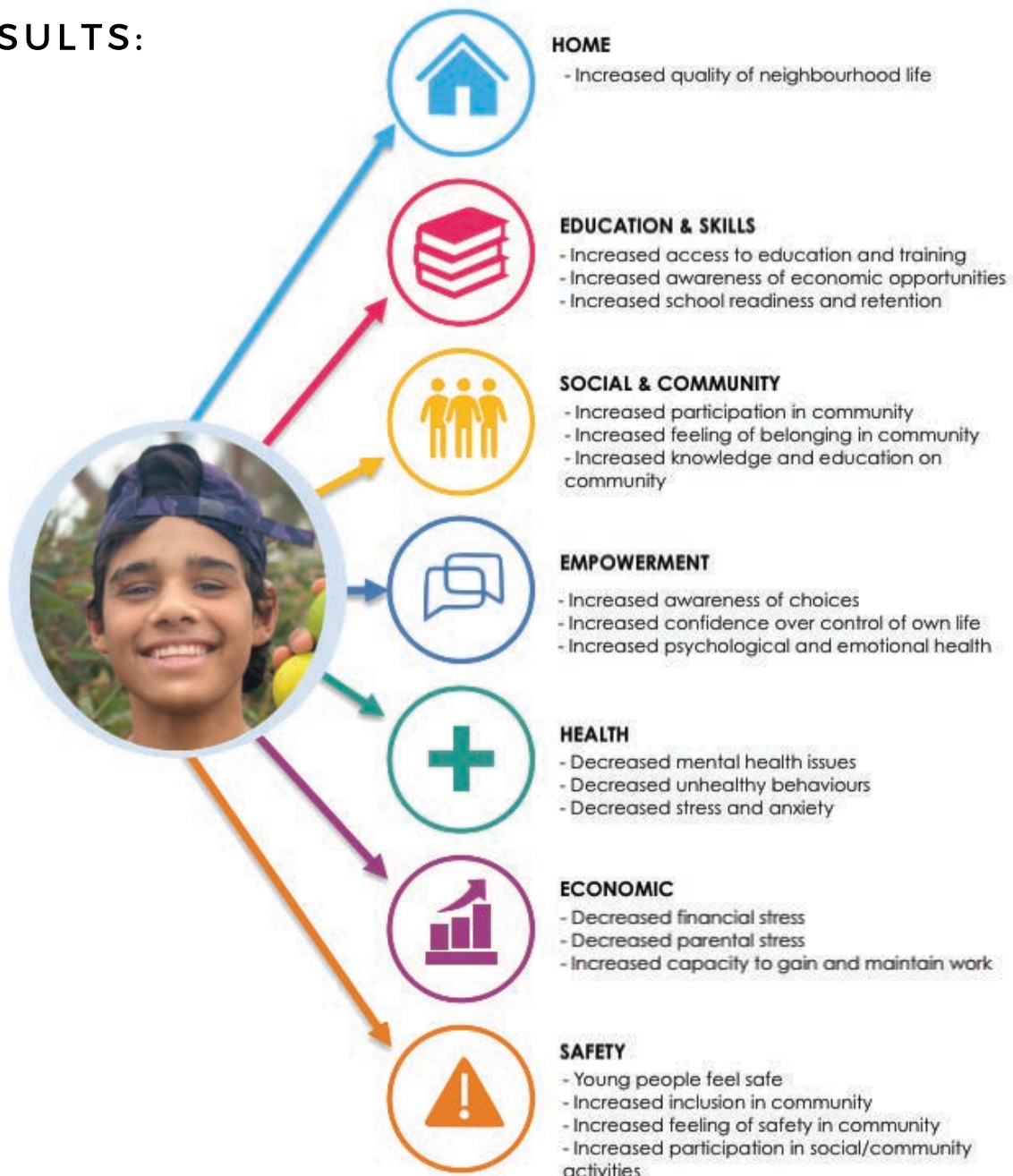


LeaderLife's three core programs work respectfully with the community, providing a platform of empowerment, delivering effective early intervention and prevention strategies through successful, innovative and evidence-based diversionary and therapeutic programs. LeaderLife's programs gently create opportunities for behaviour change and helps transform lives within Dubbo. Our programs are 100% voluntary. We never chase; we draw people in, and while we do not run any Indigenous-specific programs, over 90% of those accessing our supports are Aboriginal. It seems our approach just so happens to work with our Aboriginal people. Our program and approach has been chosen as one of a number of programs across Australia that is undergoing research YARRN (Youth At Risk Research Network) with the Drug and Alcohol Research centre from the UNSW. This research will continue until 2021 and is investigating innovative approaches to help kids climb out of disadvantage.



OUR OUTCOMES

LEADERLIFE'S HOLISTIC PROGRAMS AND COMPASSIONATE APPROACH ENSURES THAT CHILDREN, YOUNG PEOPLE AND COMMUNITY ACHIEVE THE FOLLOWING RESULTS:



Resilience at Apollo House was our first program and started in February 2011. Since this time, the people in our community have been supported over 100,000 times! Apollo House is the core of all our programs; our hub; our community meeting place. The centre was initially started in the early 2000's by a group of Indigenous women called the East Dubbo Women's Group, who lived in the community. It was created by community for community.

Over this time, Apollo House has pivoted into what it is now based on the surrounding needs. For many it is the first point of call in times of crisis, with people knowing that they will be compassionately supported into services. In many instances, Resilience at Apollo House is the conduit between community and mainstream services. All programs run directly out of Apollo House, and is our core funding that links the community with hard services like drug and alcohol support, legal services, and community development programs.

The **Resilience program** is mapped to achieve the following key outcomes:

- Community development
- Coordination of a community hub, Apollo House, in the heart of a social housing estate
- Outreach centre for hard services such as drug and alcohol, legal support
- Conduit between services and hard to reach families
- Referral point
- Parental support and advocacy for families
- Capacity building for adults and families



"THIS PLACE [APOLLO HOUSE] IS WORTH ITS WEIGHT IN GOLD."
COMMUNITY MEMBER

With kids being the core of our work, **Skillbuilders** was initiated in 2012 as a *Communities for Children* initiative and has evolved over time to meet the needs of the kids and the community. Skillbuilders is for kids aged between 5 and 12 years of age experiencing disadvantage, and for some, caught between some incredibly destructive behaviours, complexities and trauma throughout their life; complexities that they didn't choose. Typically, Skillbuilders looks like an after-school program - not one where kids are dropped off, but where kids excitedly run to Apollo House as soon as they finish school. Skillbuilders is not always about the activity that's running each day, which could be a touch footy match, Aboriginal dance classes, Zumba, yoga, art and craft, drama classes or robotics.

**"I LOVE COMING TO
APOLLO HOUSE EVERY
DAY"
8-YEAR-OLD GIRL**

Skillbuilders is about relationships. It's about care, it's about love and the adult champions in the lives of young people who all deserve the best. Skillbuilders creates opportunities for the building of foundational skills like social and emotional intelligence, awareness and confidence, so children can move through life stages until adulthood with as much ease as possible.

The **Skillbuilders program** is mapped to achieve the following key outcomes:

- Early intervention approach
- Diversionary and educational activities for children
- Life skills and recreational activities
- Support for children with complex issues
- Provision of secure, positive adult role models
- Proper Care (Case Management)
- Engagement of hard to reach kids
- Crime prevention



CATALYST (Creating Access To A Loving Youth Support Team) is our most recent program, and was inspired by many in the community. We have learnt so much in establishing CATALYST from our amazing friend and mentor Bernie Shakeshaft, and his great team from BackTrack in Armidale. BackTrack is an incredible holistic program doing great things for kids and communities.

CATALYST offers young people who have lost their way an opportunity to reconnect with education and training, become work ready, find jobs, heal from psychological trauma and pursue positive life pathways that result in meaningful lives. Some of the youth LeaderLife supports are experiencing a form of homelessness, 90% have at least one identifiable health issue, many are not going to school or experiencing repeated suspensions and so many have been in contact with the legal system.

The **CATALYST program** is mapped to achieve the following key outcomes for young Indigenous males:

- To develop a sense of belonging and feelings of being cared for
- To engage in activities designed to develop and strengthen functional life skills
- To identify and pursue personal education and employment goals
- A reduction in youth crime in the community
- Reduced intergenerational disadvantage in the community
- Proper Care (Case Management)

**"IF IT WASN'T FOR CATALYST I'D BE LOCKED UP, ON THE HARD DRUGS OR MAYBE EVEN DEAD."
16-YEAR-OLD BOY**





**"WE WANTED TO BE
PART OF THIS
[CATALYST] PROJECT
BECAUSE WE WANT TO
GIVE BACK TO THE
COMMUNITY."
CATALYST PARTICIPANT**

OUR PEOPLE

BOARD OF DIRECTORS



MELINDA PHILLIPS
CHAIRPERSON

Melinda has had 30 years' experience in Community Services both in the Disability and Youth Service Sectors. Following 6 years as the CEO of Vivability Disability Services Bathurst, Melinda undertook the role of General Manager for BackTrack Youth Works in Armidale. BackTrack Youth Works is an organisation dedicated to the vision of helping as many kids as possible who experience hard times.



FIONA PRENTICE
DIRECTOR

Now retired, having spent 21 years as a secondary school principal experiencing the challenges of trying to balance the widely varied needs of many young people within policy constraints, Fiona is pleased to be able to contribute to meeting the needs of the young people engaging with LeaderLife.



MATTHEW WADE
DIRECTOR

Matt is a member of the LeaderLife Board and brings 16+ years of experience in the Banking and Finance industry to the role. Matt lives in Dubbo with his wife and young family.

Matt was drawn to the positive work being achieved at Apollo House, and was lucky enough to be able to experience the positive difference that the team was making whilst volunteering at the centre.

After growing up on a farm and working in the agricultural field, Matt is very excited about being involved in the Soil2Soul program with LeaderLife and making it a success.

OUR PEOPLE

BOARD OF DIRECTORS



LIONEL WOOD
DIRECTOR

Lionel is a proud Murrawarri man, who has worked with youth in the community for over 8 years. Lionel values the work LeaderLife do for the young Indigenous youth and their families in the Dubbo community and have seen first-hand the positive impact they have on their lives.



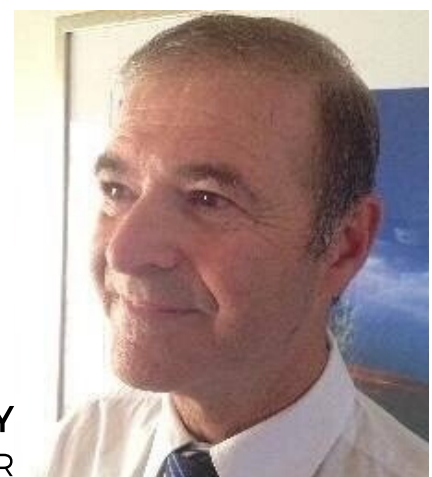
PHILIPPA GOLDSMITH
DIRECTOR

Pip Goldsmith's professional experience spans include communications, government and corporate sectors. Originally from Coonamble, north of Dubbo, Pip has lived in Sydney and country towns across NSW. Pip is now based back in Coonamble with her family.

Committed to making meaningful contributions to her community, Pip is drawn to LeaderLife's approach to making the world a better place. Pip is on the board to provide any expert support that she has, to allow the LeaderLife team to get on with what they do so well.



**ALEXANDRA
QUIGLEY**
COMPANY
SECRETARY



JOHN CURLEY
PUBLIC OFFICER

OUR PEOPLE

THE TEAM



**JOHANNA
LEADER**
FOUNDER
AND CEO



**MELANIE
SINGH**
PROGRAM
COORDINATOR



**FRANK
DOOLAN**
INDIGENOUS ELDER
AND COMMUNITY
WORKER



**JUDY
ARMSTRONG**
ALLIED HEALTH
COMMUNITY WORKER



**TAJE
FOWLER**
COMMUNITY
RESEARCH OFFICER



**ALEX
BONEY**
TRAINEE YOUTH
WORKER

**MYLES
RYAN**
TRAINEE
YOUTH
WORKER



**GWYNN
SZOKO**
ADMINISTRATION



MESSAGE FROM OUR CHAIR

It is a privilege to be a part of the LeaderLife team, as it continues to grow from strength to strength. Establishing itself this year as a not-for-profit organisation with DGR status following its successes since 2011 operating as a sole trader from Apollo House, LeaderLife is poised to expand its operations and capabilities and continue to fill a much-needed gap in the community.

Working in the community with highly disadvantaged and disengaged young people to develop the life skills required to turn their lives around takes a dedicated team that are thinking and working creatively; with a never give up approach. The philosophy Joh Leader and the team at LeaderLife undertake to 'bravely do things differently, with the vision that all can lead a life of purpose, participation and potential if the right approach is adopted' is testament to the dedication of services provided by the team, and felt by the thousands of young people and their families who have been supported over the past 10 years.

I first became aware of the work being undertaken at Apollo House through our association with Dubbo CAPP in 2016 and immediately recognised the synergy in the passionate commitment to providing innovative, flexible, holistic, long term programs to support at-risk kids. The team at LeaderLife knows it takes a community approach to help young people break out of disadvantage and as such work relentlessly with government, philanthropists, local organisations, Elders, community groups and families to achieve their goals. With reports showing that over 80% of the young people participating in the CATALYST program didn't encounter police intervention during this time is extraordinary.

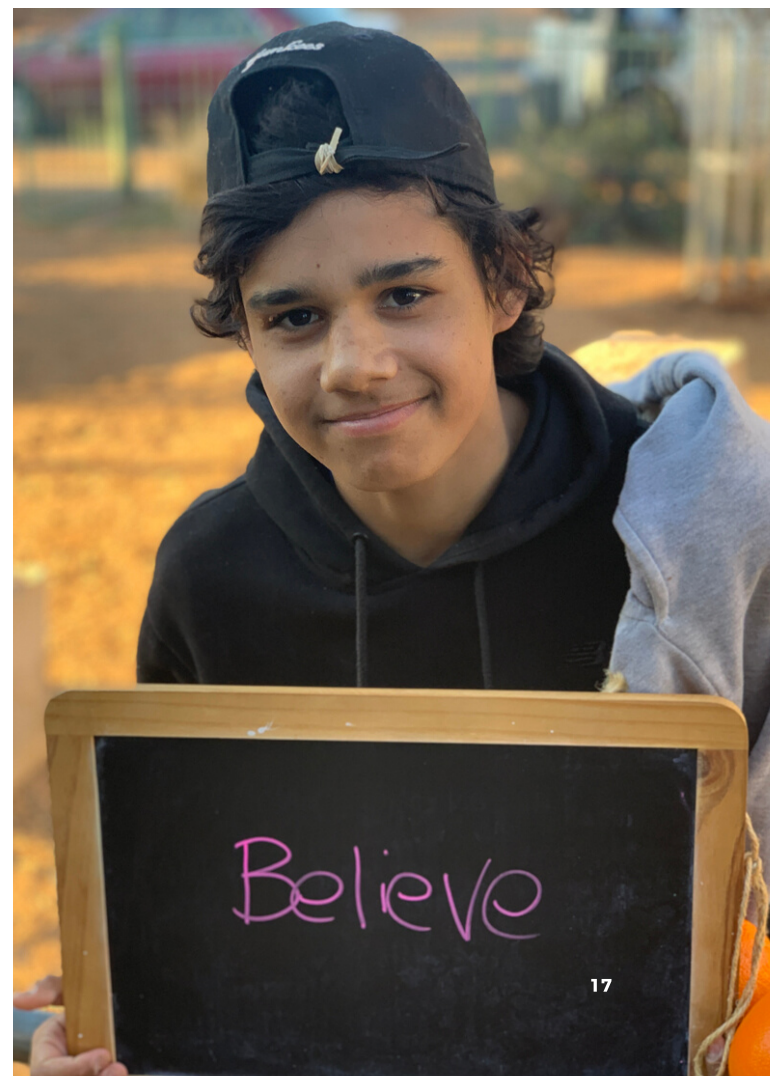
The next 12 months for LeaderLife is focused on securing flexible funding to continue and grow its existing program and concepts, including its newly developed enterprise Soil2Soul which will deliver work readiness skills and meaningful jobs in agricultural, retail, customer service and management.

We look forward to sharing the achievements of the next 12 months of both LeaderLife as an organisation, and the young people and their families it supports through its endeavours; ultimately impacting on the whole community.

Mel Phillips

Melinda Phillips

LeaderLife Chairperson





MESSAGE FROM OUR CEO

After almost a decade in the community industry, and prior to that almost a decade in the health industry (along with my side hustle as a farmer and mum) I can see that the little things can have such a great impact.

LeaderLife was born after identifying greater opportunities in the not-for-profit sector, and seeing a massive gap in the community of Dubbo; and this gap involved the provision of sincere, meaningful, holistic, long term support for kids and their families doing it tough. Care for kids who have, by no fault of their own, been caught in the crossfire of some of the most complex issues one could face. The kids we work with are amazing, smart, resilient young people; but some of them just have a pile of damage underneath.

I guess as a community we have some choices to make as to how we approach these kinds of social issues; we can ignore it, we can spend time focusing on identifying all of the problems, or we can get engaged. It's my instinct to solve problems! I have consciously made the decision to be part of the solution, and so founded LeaderLife with a passion for keeping it simple and getting the little things right.

We've got some pretty exciting, big simple ideas in the plan for next year, but are always ready to pivot if the needs of the community changes!

It goes without saying that it takes a great village to raise our children and to build a strong community. I am truly grateful for those in our village who continue to support us along every step of the way; the LeaderLife staff, our board, our funders, our volunteers, our mentors, our experts, the sideline cheerers, the believers and the dreamers; so much appreciation to you all.

Most importantly thank you to the kids, their families and the community who so generously let us be part of their lives.

From the outset, we saw it very clearly that LeaderLife was not about starting something but more about finishing something. It is our hope that one day we can get to a point where the kids we work with wake up each morning, and before their feet even hit the ground, that they think they want to live the best life possible.

Then we will know our work is done.

Johanna Leader

LeaderLife CEO



FROM OUR PATRON

STEVE PEACOCKE PATRON

My family has called Dubbo home for two generations now. I was born and raised in Dubbo when the Macquarie Raiders were called the South Dubbo Tigers and the only Rugby team in town was the Dubbo Roos. By the time I'd finished high school and was off jackarooing in Bourke, the Dubbo Rhino's had established themselves in town and the opening of Reading Cinemas meant there was a bit more choice when it came to seeing a flick on the big screen. Dubbo's a great town. It continues to grow and evolve and it's still an awesome place to grow up for a kid. However, not every kid has the wind at their back when they're starting out in life - some do it really tough.

Helping kids in unique situations break out of destructive patterns to be the best versions of themselves is important to all of us. Indeed, it's a primary focus for the crew at LeaderLife. For this reason, I feel very privileged to be a patron of such an important organisation.

Looking back at my own time growing up in Dubbo, I can appreciate that my parents sacrificed a lot to give me and my siblings a good start at life. One of the most valuable lessons they taught us was that an interesting, worthwhile life was out there for anyone prepared to work really hard for it, and always keep your standards high along the way. The main point seemed to be; if you expect great things of yourself, and if the people around you expect great things of you, with hard work and the support of your peers and elders, you give yourself a good shot at achieving it.

LeaderLife is there to foster and develop that expectation and the peer support as well as to provide mentorship for kids who maybe haven't had those things straight off the bat.



They're an incredible support base for children and their families who have experienced extraordinary life challenges early on, and I feel lucky to be part of the journey with them.

When you have a whole community making real change, you can and will have, a big, lasting impact. The stamina and compassion that the LeaderLife team have to help the Dubbo community is incredible, and I'd encourage everyone to be part of this great organisation that's helping kids doing it tough in rural NSW. By consistently putting young people at the heart of their decisions, LeaderLife is championing an approach to guidance and personal development that's making real, positive change to young people's lives. Kids in the bush from challenging circumstances can now have positive mentors and high expectations for life, and have a real shot at building solid and exciting futures for themselves. I'm looking forward to continuing my support for LeaderLife in the years to come.

I wish LeaderLife, the kids and community the best for next year, and beyond. And remember; hard work pays off,

cheers Steve

**"WE WOULD LOVE TO WORK!
TO KEEP BUSY, BUT WE
NEED YOU TO HELP TEACH
US HOW TO GET JOBS."
CATALYST PARTICIPANT**





OUR IMPACT IN 2018/2019



POLICE

YOUTH-BASED WORKSHOPS, ACTIVITIES & PROGRAMS **509**

87.5%

OF CATALYST YOUNG PEOPLE DID NOT COME IN CONTACT WITH POLICE OVER AN 8 MONTH PERIOD DURING 2018/2019



10% CORPORATE/
PHILANTHROPIC/
PERSONAL

FUNDING

22 COMMUNITY EVENTS

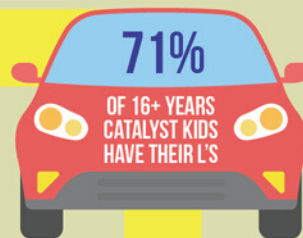


8,598

TOTAL OCCASIONS OF SERVICE (SETS OF LEGS THROUGH THE DOORS)

60% STATE GOVERNMENT

30% FEDERAL

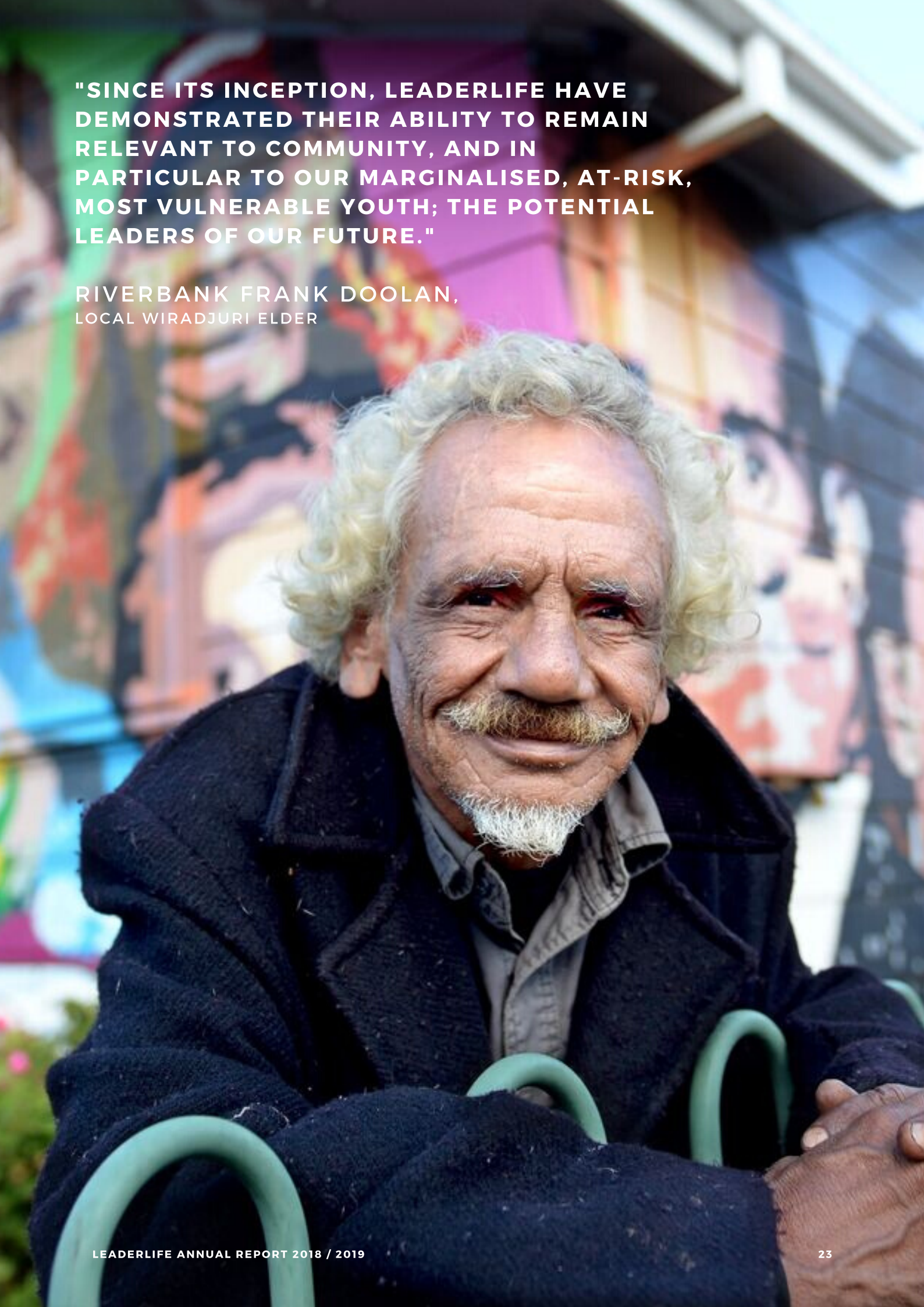


367 INDIVIDUAL KIDS ACCESSED LEADERLIFE PROGRAMS



"SINCE ITS INCEPTION, LEADERLIFE HAVE DEMONSTRATED THEIR ABILITY TO REMAIN RELEVANT TO COMMUNITY, AND IN PARTICULAR TO OUR MARGINALISED, AT-RISK, MOST VULNERABLE YOUTH; THE POTENTIAL LEADERS OF OUR FUTURE."

**RIVERBANK FRANK DOOLAN,
LOCAL WIRADJURI ELDER**





HIGHLIGHTS OF THE YEAR



EDUCATIONAL DISCOVERY PIECE

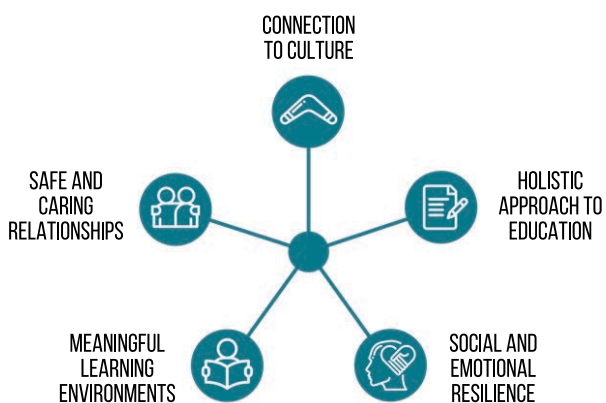
LeaderLife are members of the Children and Prison Program (CAPP) Working Group initiated by Vincent Fairfax Family Foundation and Dusseldorp Forum who made a joint commitment in 2013 to provide philanthropic support towards reducing the over-representation of Aboriginal young people in the juvenile justice system in NSW.

In 2018, the CAPP Working Group framed a piece of work to explore and co-design opportunities for Aboriginal young people to engage in learning. The aim was to involve young people, their families and carers, schools and other community stakeholders.

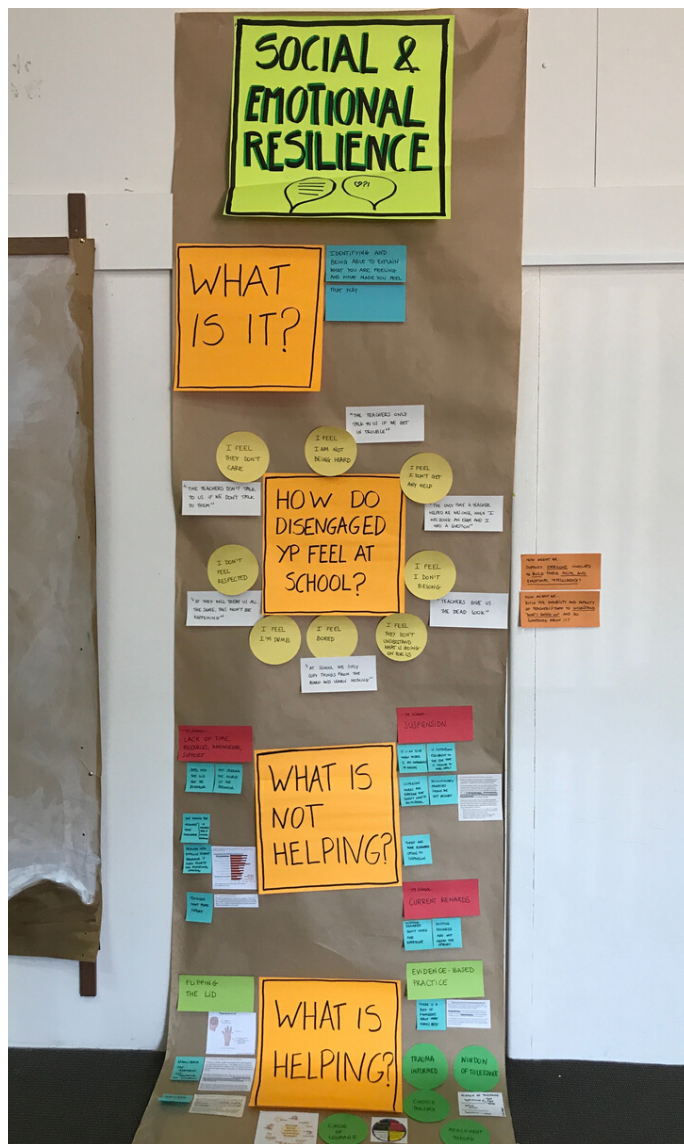
Semi-structured interviews with young people, families, Department of Education staff and other stakeholders were conducted to explore:

- What helps Aboriginal young people to learn?
- What gets in the way of their learning?
- What ideas and opportunities are there to support young people to learn?

The findings were analysed, which resulted in five key themes.



These key themes were presented at a walk-through event in September 2018, where young people presented the findings to stakeholders, Department of Education staff and CAPP partners. Ideas on each of the themes were then canvassed from participants to trial.





DRIVEN KIDS

In partnership with other organisations from the CAPP group and due to the generosity of funding bodies, LeaderLife's young people from the CATALYST program had the opportunity to participate in preparing the Drive-In site with Dubbo Landscaping and BackTrack Youth Works. The young people then helped organise and host an event at the Dubbo WestView Drive-in as part of the Youth Week Celebrations in April 2019.

The project was called **DRIVEN KIDS**.

This opportunity could not have happened without the support and commitment of the WestView Drive-In crew who believe in kids of Dubbo just as much as we do. LeaderLife established this opportunity for the CATALYST young people to move beyond diversionary activities into a longer-term plan. **DRIVEN KIDS** allowed the boys to develop a sense of belonging and connectedness, learn new skills, while creating an opportunity to give back to the community.

Following a number of different planning workshops with the young fellas, it was decided that a fence needed to be erected at the Drive-In site to keep children safe from the dam and the front entrance garden needed a landscaping overhaul. Our young people also chose the movies including new release *Captain Marvel*, award-winning documentary *BackTrack Boys* and *The Fast and the Furious*. *BackTrack Boys* was of particular interest for a community screening because the fellas have had the privilege of doing a lot of work with the BackTrack crew over the years and there was also a lot of community requests for this doco.

BackTrack work tirelessly in Armidale and are incredibly supportive of LeaderLife to keep kids alive, out of jail, and chasing their hopes and dreams.

DRIVEN KIDS was able to fund raise over \$2,080 that returned straight back into youth programs with LeaderLife.

The kids did a cracking job running the Drive-in and one young fella said, "We wanted to be part of this project because we want to give back to the community. It makes heaps of difference to be working here. We are very happy and proud of ourselves for doing the hard work. Look at us ... working hard and we like it!"



Image credit: Duke Albada



BEHIND THE SCENES – CAPTURING THE MOMENTS OF DRIVEN KIDS

Duke Albada is a humanitarian photographer and community artist. She researches relationships within communities, surveying the social and cultural identity in relation to place. Her work is extensively exhibited in Australia and Europe.

Duke thought it absolutely necessary to capture the unique story behind the **DRIVEN KIDS** project as the organisers were kids from LeaderLife at Apollo House; 15 young men aged between 14 and 17. Theirs is a story directly related to the BackTrack movie programmed for the Saturday night.

Because the bulk of the project took place behind the scenes, storyteller Duke Albada was invited to showcase the various aspects of the project. Her aim was to juxtapose the often voiced one-dimensional opinion of these kids 'being good for nothing'. The exhibition showed a multi-faceted image of these young people, featuring them engaging, interacting and contributing to our society whilst developing social and life skills.

The goal of the project and exhibition was to install pride and empower the participants, supporting them to dream big and inspire other young people. It campaigned the social need of breaking down barriers and alienation between different age groups, socio-economic backgrounds and cultures, and encouraged a dialogue about these issues.

The mix of people, iconic location, diversity of jobs, various times of day and cinematic event made for a compelling photogenic project that was exhibited at the prestigious Western Plains Cultural Centre from 18 April to 26 May 2019. It was a pleasure watching the young people and their families walk into that exhibition room for the first time; no words were needed to describe the pride.

Image credit: Duke Albada





THE ROYAL VISIT

In October 2018, the crew from LeaderLife were lucky enough to be selected to be in the VIP Picnic Area at Victoria Park to welcome their Royal Highnesses The Duke and Duchess of Sussex (Prince Harry and Meghan) to Dubbo!

LeaderLife teamed up with the BackTrack crew from Armidale and set up a dog jumping exhibition with 10 young people from our CATALYST program. It was a fantastic opportunity for the community to acknowledge the young people's achievements, and the special work of LeaderLife and BackTrack. The kids felt valued, and an incredibly important part of our society on this day.

They jumped the dogs for the Royal couple and one young fella was able to have a chat with the Duke and Duchess. Mal gave his first flower to Meghan ... he was pretty chuffed that he can now claim that the first girl he ever gave a flower to was a princess!!

It was a very humbling and proud moment for everyone involved and the confidence and behaviour of these young men in front of the large crowds could not be faulted.

Congratulations to Dubbo Regional Council for organising such a cracking day; storm and all!



LEADERLIFE LAUNCH

LeaderLife held its official launch to coincide with the Royals' visit to Dubbo. The event was kindly supported by Vincent Fairfax Family Foundation and Dusseldorp Forum. The night was attended by over 150 people including young people from our CATALYST program, and was an opportunity for the community to learn about the work we do in changing young lives and to showcase the exciting work that is already happening in Dubbo through the Children and Prison Program initiative.

Guests on the night enjoyed a special screening of the award-winning Australian documentary, *Backtrack Boys*, which scooped the Audience Awards for Best Documentary at the Sydney, Melbourne and Canberra Film Festivals!

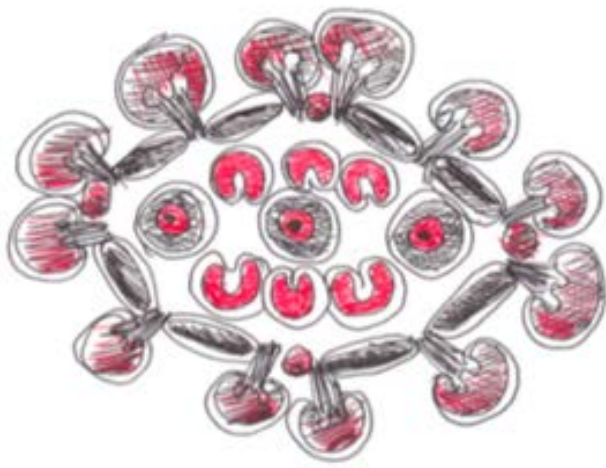
After the screening there was a Q&A session with Bernie Shakeshaft, the founder and CEO of BackTrack and our CATALYST young people joined Bernie on stage.

LeaderLife have been working with Bernie and BackTrack for the last few years through their BackTrack Everywhere model which is their community mentoring initiative, ultimately contributing to their goal of helping as many young people having a hard time as possible.

BackTrack have so generously shared their learnings and youth work model with LeaderLife, provided business support and professional mentorship, shared resources and ideas, but most importantly helped us to dig deep to find what truly works to help kids live well in Dubbo.

Always onwards and upwards when you work with BackTrack. Thank you.





YARRN

LeaderLife is a member of the YARRN (Youth At Risk Research Network) which is being driven by the UNSW Drug and Alcohol Research Centre. This is a national study to identify innovative ways to engage at-risk youth.

LeaderLife commenced data collection to understand and analyse young people's pathways. This in-depth analysis will look at education, health, crime statistics, suicide risk, well-being, drug and alcohol, employability skills, and identity. This type of analysis is completed 6 monthly with the kids unless individuals are identified as needing close monitoring based on risk factors.

Evaluation of the BackTrack research shows reductions in crime among young people and some other aspects (e.g. improved school attendance), but not others.

The cost-benefit (economic) analysis and the results show the BackTrack program returns about \$3.50 in cost savings (reduced crime, increased employment, etc) for every \$1 invested.

Given that LeaderLife is based on the same logic, we would expect to see similar results..

"YARRN supports their [LeaderLife's] best evidence approach to working with young people and commitment to working with YARRN and contributing to the evidence base of research aimed at support young people at-risk." Skye Bullen, PHD , UNSW



"THANK YOU TO THOSE WHO BELIEVE IN US, BUT WE NEED MORE HELP. THERE ARE NOT MANY PEOPLE IN THE COMMUNITY THAT ARE HELPING US, EXCEPT FOR LEADERLIFE. WE NEED MORE SUPPORT."
CATALYST PARTICIPANT





**"IT'S HARD TO FIND THE WORDS
TO DESCRIBE HOW MUCH
APOLLO HOUSE HAS HELPED
ME AND EVERYBODY ELSE."**

**CAT M,
APOLLO COMMUNITY MEMBER**

FINANCIALS

STATEMENT OF PROFIT OR LOSS AND OTHER COMPREHENSIVE INCOME

ACCOUNT	2019
INCOME	
REVENUE	
Fundraising	2,852
Grant - Driven Kids Project	24,200
Individual Donation	4,890
Organisation Donation	3,240
Sponsorship	1,000
Donation CATALYST	4,545
Total Revenue	40,727
TOTAL INCOME	40,727
GROSS SURPLUS	40,727
EXPENDITURE	
Bank Fees & Charges	172
Behind The Scenes Project	4,200
Driven Kids	19,039
Teenage Boys CATALYST Program	4,545
TOTAL EXPENDITURE	27,956
CURRENT YEAR SURPLUS / (DEFICIT)	12,771

FINANCIALS

STATEMENT OF FINANCIAL POSITION

ACCOUNT	30 JUN 2019
ASSETS	
CURRENT ASSETS	
BANK ACCOUNTS	
Business Advantage	37,443
Total Bank Accounts	37,443
RECEIVABLES	
Accounts Receivable	174,900
Total Receivables	174,900
Total Current Assets	212,343
TOTAL ASSETS	212,343
LIABILITIES	
CURRENT LIABILITIES	
PAYABLES	
GST	13,769
GST Error	227
Trade Creditors	15,577
Total Payables	29,573
Income in Advance	170,000
Total Current Liabilities	199,573
TOTAL LIABILITIES	199,573
NET ASSETS	12,771
EQUITY	
Retained Earnings	12,771
Total Equity	12,771



SUPPORTERS

How can we ever thank you enough. It is only through the efforts and support of so many, that LeaderLife can do all we do for young people, their families and the Dubbo community. By working together as individuals, organisations, community groups, funders, donors, partners, volunteers, employers, and supporters we achieve extraordinary results. Your help is allowing us to support many young kids to lead a life of 'purpose, participation and potential'. Every single contribution; in-kind, large or small, is critical to the success of all that we do. We couldn't do it without you. From the kids, their families, the staff, the volunteers and everyone at LeaderLife – heartfelt thanks for all you do for us. Special appreciation to:

Aboriginal Affairs NSW
BackTrack Youth Works
Baker McKenzie
CatholicCare Wilcannia-Forbes, Communities
for Children
Charles Sturt University
Children and Prison Program (CAPP)
Clare Ainsworth and Tommy Herschell
Dubbo Regional Council
Dusseldorp Forum
FACS
Indigo Marketing
Jane Dempster

Jane Watson
Natalie Bramble
Phillipa English
SecondBite
St Aloysius College
The Department of Justice
The Rotary Club of Dubbo Macquarie
The Rotary Club of Dubbo South
UnLtd
UNSW - YARRN (Youth At Risk Research
Network)
Vincent Fairfax Family Foundation
Western Districts Memorial Park

A big thanks to all of the photographers whose images of our beautiful kids, our community and the special moments this year have filled the pages of this report. A special shout out to:

Clancy Job Photography

Duke Albada Photography

Jane Dempster

LOOKING TO THE FUTURE



WHERE WE'RE GOING

In the next 12 months, LeaderLife is focused on securing multifaceted, flexible funding to continue our sacred community work and to grow our existing program and concepts.

SOIL2SOUL SOCIAL ENTERPRISE

To help kids live their best life and to fill the next gap for young people toughing it out in Dubbo, LeaderLife have developed a Social Enterprise concept called **Soil2Soul**. This model will deliver meaningful jobs and skills to young people (15-25 years) who are mostly Indigenous, who have disengaged from education and are on the edge of the criminal justice system. As soon as seed funding becomes available, this social enterprise will kick start.

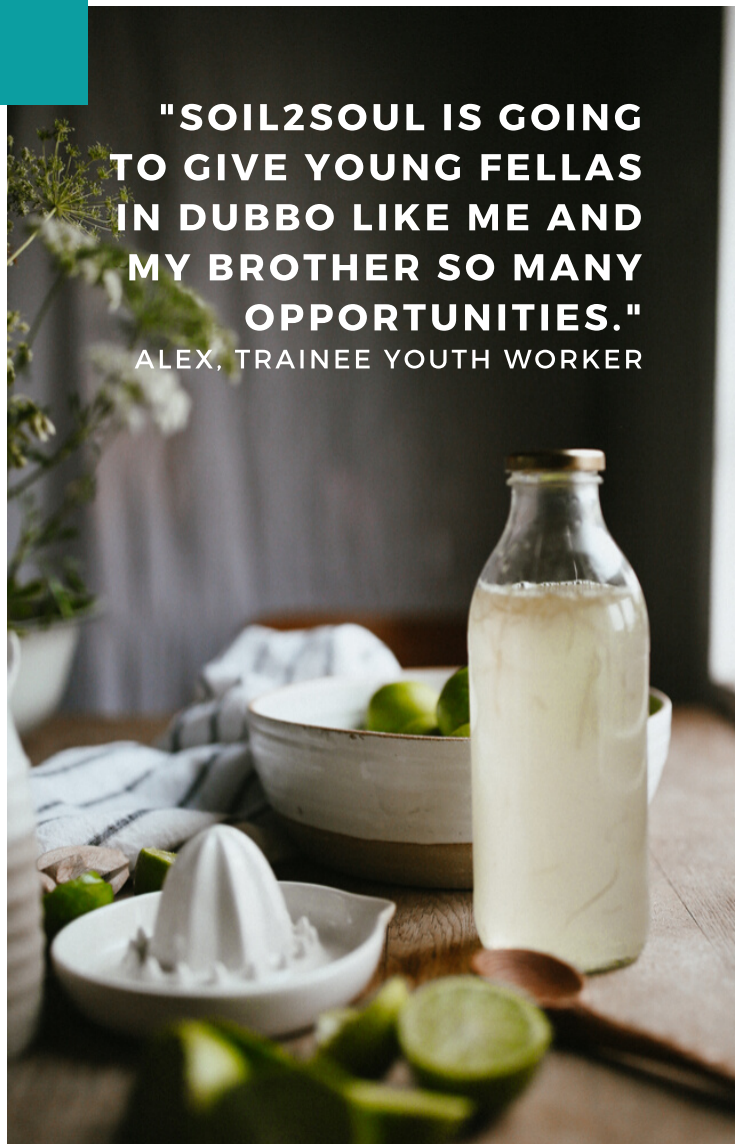
Utilising existing infrastructure from a lime farm in Narromine, thanks to the incredible generosity and commitment of the Maxwell family, this project will employ a minimum of twenty young men in the first year. They will develop work-readiness skills across agricultural, retail, customer service and management. Selling an initial 10-tonne harvest in the first year (growing year-on-year) will provide financial viability for the enterprise, creating an ongoing work-readiness pathway for disengaged youth.

Soil2Soul reinforces positive life pathways. Most importantly, this social enterprise idea came from the kids. One said "if we are going to keep kids out of trouble and off the streets, we have to start our own business and get them jobs. But jobs with mentors who can teach us how to work and people who understand us kids".

It's simple but effective; and getting the little things right.

"SOIL2SOUL IS GOING TO GIVE YOUNG FELLAS IN DUBBO LIKE ME AND MY BROTHER SO MANY OPPORTUNITIES."

ALEX, TRAINEE YOUTH WORKER





CONTACT
APOLLO HOUSE
11 COLLINS AVENUE
PO BOX 4700
DUBBO
NSW 2830

02 6881 8756
HELLO@LEADERLIFE.ORG.AU
LEADERLIFE.ORG.AU

LIKE AND FOLLOW US ON

